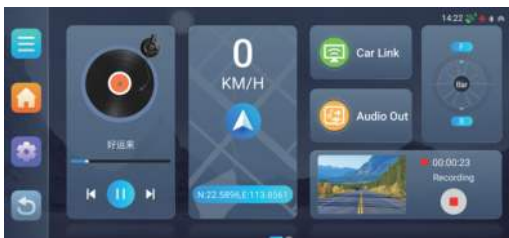
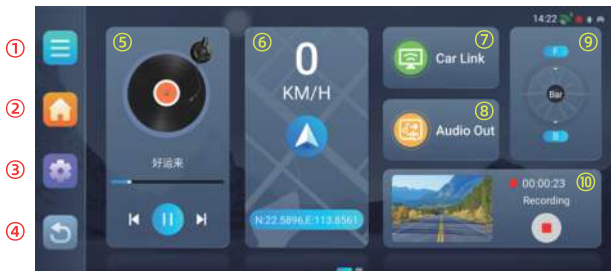


MOTORCYCLE INTELLIGENT NAVIGATION MANUAL



Operating Instructions

1. Main interface



① Open the history APP list and slide up to clear the background running APP

② Return to the main interface

③ Quick Settings

Short press: open to view the status bar, adjust brightness, WIFI, TB, flight mode, hotspot switch, power off button options (power off, restart, screenshot function)

Long press: set button to enter system settings related functions



④ Return to previous level

⑤ Play video, music, and pictures

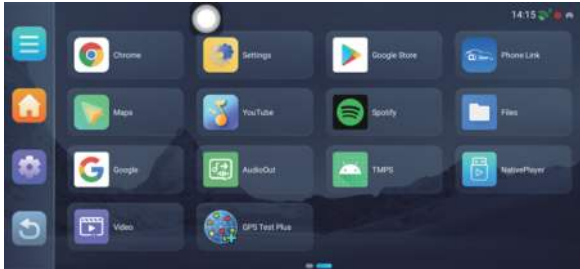
⑥ Map function

⑦ Choose to connect to Carplay or Android Auto

⑧ BT related functions.

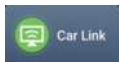
⑨ Real-time display of current vehicle tire pressure

2. Application Page



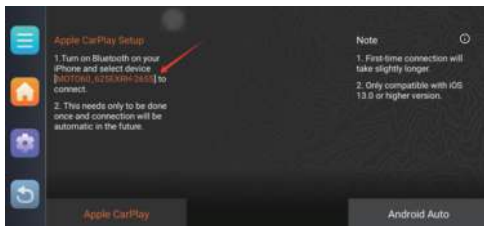
- A. Chrome: Google browser, enter the URL to search
- B. Settings: System settings related functions
- C. Google store: Click to register and log in to a Google account.
After successful login, you can download APP applications
- D. Phone Link: Open the Carplay/Auto connection interface
- E. Maps: Click to enter the map function
- F. YouTube: Click to open YouTube related videos and music functions
- G. Spotify: Click to enter the music player
- H. Files: File manager, open to copy, paste, and delete files
- I. Audio out: BP Bluetooth control interface
- J. TMPS: Bluetooth tire pressure
- K. Nativeplayer: Play video, music, and picture functions
- L. Video: Play back local video player
- M. GPS: Connect to GPS to display positioning information

3.CarPlay Connectivity

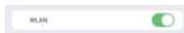


Click CarPlay

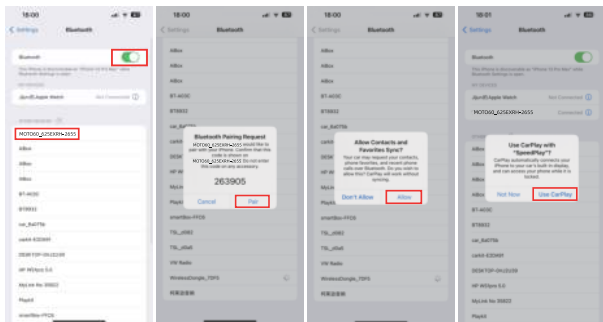
Click the CarPlay icon application icon to enter the application interface and connect the device according to the prompts.



① Turn on iPhone WLAN



② Turn on the Bluetooth of the iPhone,search for the bluetooth device naming "MOTO60_625EXRH-xxxx" ,Pair it and allow the sync,finally click "Use CarPlay"

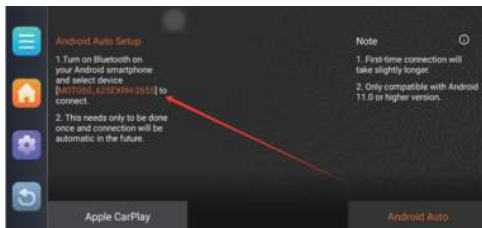


③After successful connection, enter the CarPlay interface, you can use carplay call, navigation, music and so on

4.Android Auto Connectivity

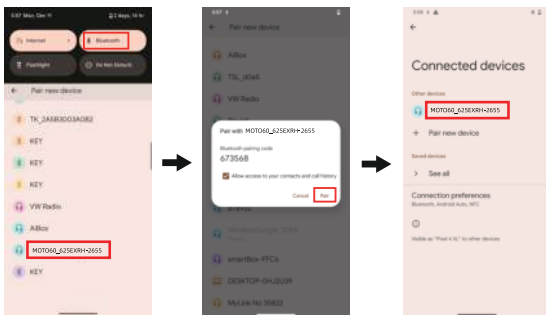


Click the Android Auto icon application icon to enter the application interface and connect the device according to the prompts.



① Turn on Phone WiFi WiFi ☐

② Turn on the Bluetooth of the Phone,search for the bluetooth device naming "**MOTO60_625EXRH-xxxx**" ,Pair it and allow the sync,Waiting for a connection to come in.



③.After successful connection, enter the Android Auto interface, you can use Phone call, navigation, music and so on

5.Audio out



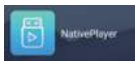
Audio out: Click to enter BT related functions



BT Audio Click [More Settings] to enter the Bluetooth interface and connect to the mobile phone Bluetooth (please make sure the current Bluetooth device hotspot is turned on)

Note: This feature does not work if you are using CarPlay or Android Auto.
You can use your phone's Bluetooth to connect your Bluetooth headset

6.NativePlayer



Video: Supports MP4, MOV, 3GP, MKV, FLV, WMV, but does not support 2K and 4K resolution videos, VOB, RMVB, MPG

Music: supports MP3, ogg, aac, flac, wav, but not WMA, ape

When the music is playing, turn off the device, and the music will automatically play when you turn it on next time

Image: Support JPG, BMP, GIF, PNG



7.Camera



Open the recorder, the following screen appears:

Slide the preview interface to switch between front, back, and split screen previews, click Return to exit



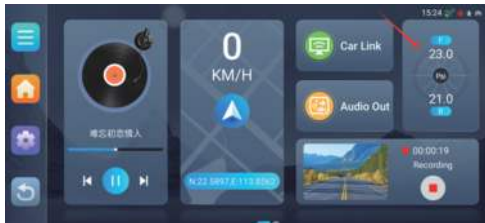
- ① Return
- ② Enter the video playback function
- ③ Lock the video being recorded, and the locked video will not be overwritten by the looped video.
- ④ Click this button to take a photo
- ⑤ Turn recording on or off
- ⑥ The video setting function interface is as follows



- a. Format SD card: This item can be used to format the TF card.
- b. Recording time: Set the duration of the video segment: 1min 2min 3min 4min 5min optional.
- c. Speed unit: km/n and mph optional.
- d. Lens height adjustment: Select the center console and click to enter the current calibration mode.
- e. Camera horizontal flip: front and rear switch

8.Tire pressure function

The main interface displays the current vehicle tire pressure in real time:



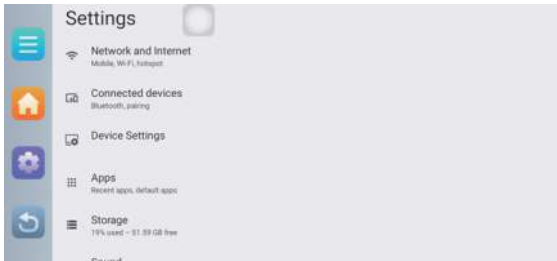
- a. Tire pressure display (F/B tire pressure value; click again after pairing to delete pairing)
- b. Low pressure warning value (When the F/B tire pressure reaches or falls below this value, the current number will turn red)
- c. High pressure warning value (When the F/B tire pressure reaches or rises above this value, the current number will turn red)
- d. Unit switching: (Bar: pressure unit switching °C: tire pressure temperature unit switching)



8.Settings



Settings: Click to enter the system settings interface and perform system-related operations



a. Network and Internet:

Click " " in the WLAN column to quickly turn on the WIFI function.

The system automatically scans nearby WIFI signals and lists the searched wireless routers. Click the searched wireless router name and a setting window will pop up. Please follow the prompts to complete the connection to the WIFI network. Some encrypted networks require a valid key. Please enter the correct password and click "Connect" to the network.

b. Connected devices:

Turn on Bluetooth, click the pairing option with a new device, the system automatically scans nearby Bluetooth signals, lists the searched Bluetooth names, and click the searched Bluetooth name to connect.

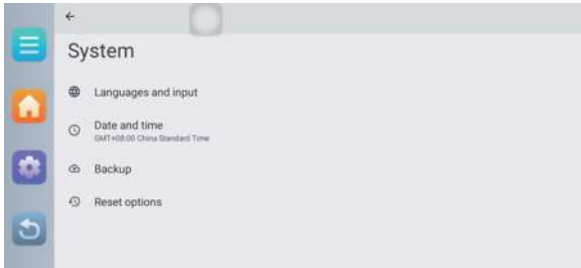
c. Apps:

Click the "Apps" item in the settings interface to enter the management application settings. Click this item to select: Downloaded, Internal Storage, Running, All, etc. to view applications, and you can also uninstall or open programs.

d. Storage:

Click the "Storage" item in the settings interface to display the total capacity, available space, and used space of application storage space or data storage space. If a TF card is inserted, the total capacity, available space, and used space of EXTSD will be displayed.

9.System



a. Language and input:

Click the "Language and input method" item in the settings interface, spell check tool: check the box to select smart spelling correction. Default: You can set the corresponding input method.

b. Date and time:

In the "Date and time" item in the settings interface, enter the date and time settings interface: You can choose to automatically determine the date and time, select the time zone, use the 24-hour format, select the date format and other information. For example, if you don't want to use the value provided by the network, click "Automatic" to uncheck it, and then select "Set date" and "Set time" manually;

c. Reset options:

You can reset WLAN, mobile data network and Bluetooth settings, reset application preferences, and clear all data (restore factory settings)

About the device:

Status information: system upgrade, device name, IP address, WLAN MAC address,

Model: Display product model

Android version: Display android version

Firmware version number: Display current firmware version number

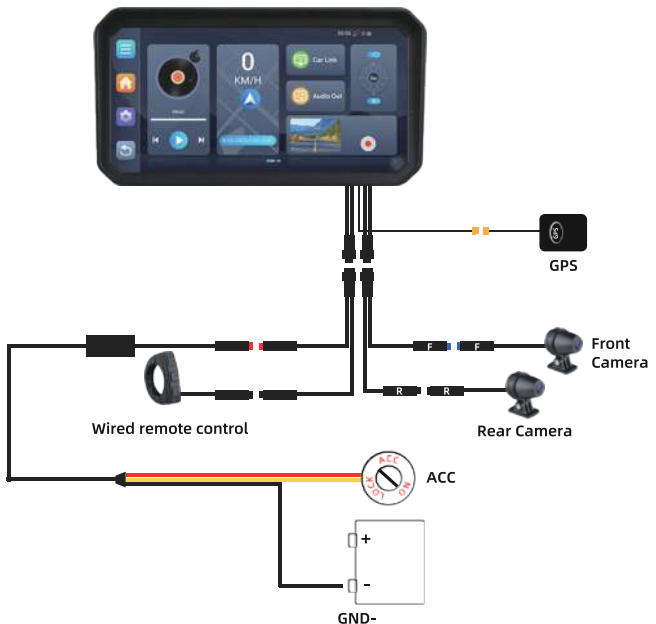
Kernel version: Display kernel version information

Processor type: Display processor type

10.Tire pressure sensor installation

- ① Remove the existing valve cover.
- ② Click “Pair” on the tire pressure interface and then install the tire pressure sensor,Waiting for the pairing to be completed.
- ③ Check air tightness

11.Installation instructions



Precautions

To avoid injury or property loss to the user or other persons, please read and follow the following precautions carefully.

1. Read the operating instructions: Before operating the machine, you must read and understand all the operating instructions.
2. Save this instruction manual: After reading this manual carefully, you must keep it properly for future reference.
3. Comply with all warnings and instructions: All warnings and instructions on this product and the manual must be strictly followed.
4. Accessories: Please do not use accessories not recommended by this manufacturer. If inappropriate accessories are used, accidents may occur.
5. Do not dismantle or modify the product: It is strictly forbidden to dismantle or modify the machine, or cut the power cord and connect it to other power sources, which will cause the product to smoke, catch fire, electric shock or cause malfunctions.
6. Do not insert foreign objects into the machine: If metal objects (coins, tools, etc.) or flammable materials enter the machine, it may cause heating, fire, electric shock and malfunctions due to short circuits.
7. When a fault or abnormality occurs: When the machine is in an abnormal condition such as smoke or odor, please stop using it immediately, turn off the power supply and contact the dealer to avoid dangers such as fire or electric shock.
8. Avoid heat sources: Do not install the machine in a place exposed to direct sunlight or high temperature.
9. Use an appropriate power supply: The machine is designed to use a 12v DC cathode grounded battery system.
10. Safety check: Do not attempt to repair the machine yourself. Let the maintenance personnel perform a safety check after repair to ensure that the machine is able to operate normally.
11. Do not operate while driving: If you operate while driving, it will cause a traffic accident due to lack of attention in front. Be sure to park the car in a safe place before operating.
12. When washing the car: Do not expose the machine and other supporting equipment, to water and make it excessively wet.
13. When parking: Parking the car in the sun will cause the temperature inside the car to be too high. When turning on the machine, please cool it down first.